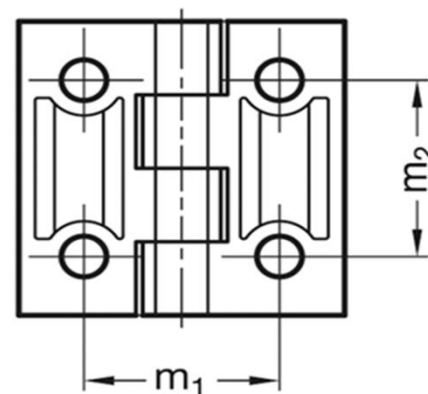
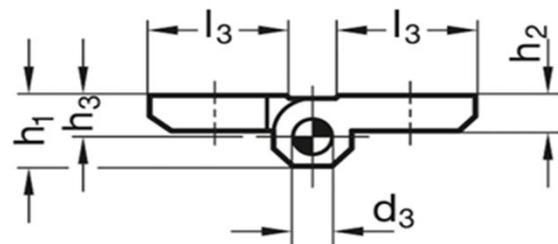
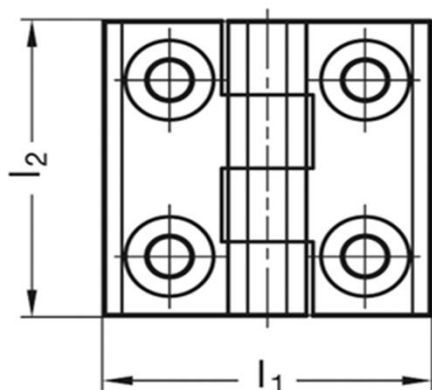
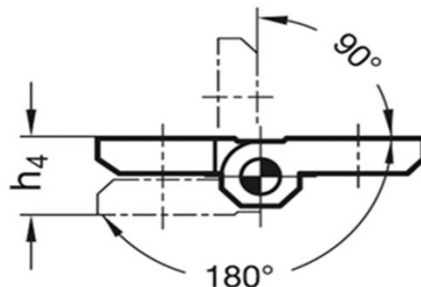


# GN 237-ZD-40-40-A-SR

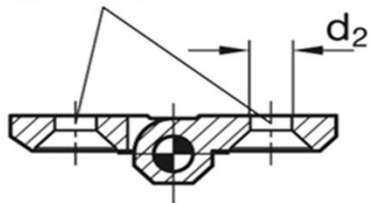


Rozsah otočení

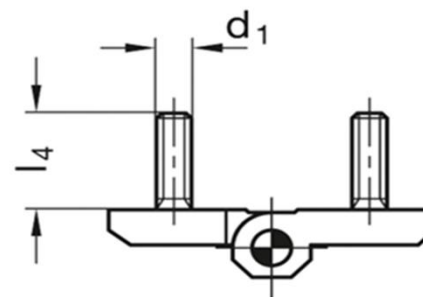


Typ A

Otvory pro šrouby se  
zapuštěnou hlavou  
DIN 7991



Typ C



l1	l2	d1	d2	d3	h1	h2	h3	h4+0.5	l3	l4	m1	m2
(mm)												
40	40	-	5.3	4	9	5	5.5	11	14	-	25	25